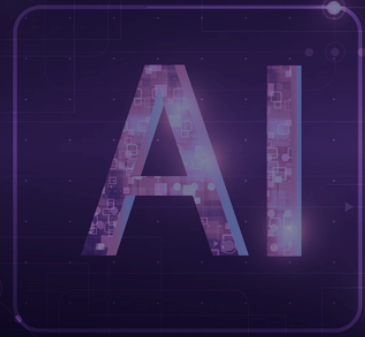


# Unlock Seamless AI Integration with Our Advanced Data Management Tool



## Streamline Processes & Enhance Efficiency

With our cutting-edge data management solution, you can eliminate manual processes and optimize your workflow. While small chatbot projects may not need a data management tool, large-scale implementations benefit immensely. Our tool automates the complex data wrangling and preparation required for enterprise chatbot deployment, ensuring a smooth and efficient process for both data owners and developers.

### Comprehensive Data Management

#### Intelligence on Unstructured Data:

Gain insights into the content and metadata of your unstructured data.

#### Scale & Query:

Perform queries and filter across all your data simultaneously in one unified view.

### Effortless Data Cleaning

#### Content Understanding:

Identify and manage the contents of your unstructured data, flagging or removing sensitive information like PII.

#### Efficiency Gains:

Reduce meetings, minimize confusion, and accelerate project completion. Save time and money, and reduce the need for highly technical talent.

Our innovative approach addresses the unpredictability and complexity of LLMs, offering reliable solutions for QA processes and project management. By providing a single, user-friendly platform for data preparation, we enable non-technical team members to manage large datasets effectively.

# Why Aparavi?

Unlike existing solutions that rely on manual coding and configuration, our tool is designed to handle complex, large-scale data integration projects effortlessly. When dealing with vast amounts of data spread across various data centers, traditional methods fall short. Our product is purpose-built to manage these challenges efficiently.

## Tackling the Real Challenges

### Human Coordination:

Solve communication and coordination issues that often plague large projects.

### Automation:

Simplify the enterprise RAG model and make data management self-service, speeding up the adoption of AI technologies.

## Tackling the Real Challenges

### First-Time Problems:

Overcome the learning curve and common hiccups in AI project development.

### Unstructured Data Mastery:

Equip data scientists, who may not be LLM experts, with the tools they need to succeed.

### Software Coordination:

Facilitate the transition from traditional data science to leading large software development projects.

Our advanced data management tool revolutionizes the way enterprises handle AI projects, ensuring efficiency, accuracy, and seamless integration. Trust us to simplify your data management needs and propel your AI initiatives to new heights.

[Learn More](#)

For more information on how Aparavi can enhance your AI projects, visit our website or contact our experts for a personalized consultation. Have enterprise AI by the end of the day, not the end of the year with Aparavi!  
[Learn More](#)

